

Flood Risk Management in Bristol

Avonmouth Severnside Enterprise Area (ASEA) Ecology Mitigation and Flood Defence Project

Flood storage basin in Southmead



Embleton Road SuDS Southmead



Dorian Road drainage improvements

Station Lane drainage improvements

Easton Cycle Way infiltration basin

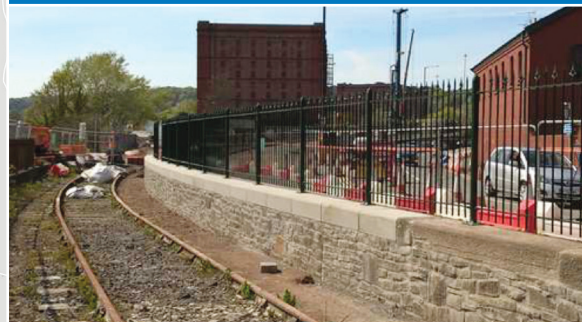
Easton show home rain garden

Brislington Brook retaining wall repair



River Avon Tidal Flood Risk Management Strategy

New flood defence wall at Cumberland Road



Flood proof fencing in south Bristol



Reducing Flood Risk

Since the inception of the Local Flood Risk Management Strategy in November 2014 we have reduced the risk of flooding to an estimated 220 homes .

Recent works undertaken are demonstrated in the map adjacent.

This has included making a number of improvements to river control structures to reduce the risk of flooding, for example in Victory Park, Brislington and Trevisa Grove, Brentry.

We have also worked in conjunction with partners and the community to proactively manage and respond to a number of weather warnings and flood events.

Contributing towards achieving sustainable development

The BCC FRM team review planning applications in respect of surface water management and drainage. This helps influence development in the city and reduces its impacts on increasing flood risk. Benefits from this are gained in the following aspects:

- Approximately 250 development proposals have incorporated Sustainable Drainage Systems (SuDS) in their designs
- Nearly 200 have made a reduction in existing surface water run off rates
- Over 150 have made water quality improvements

Stay in touch with your council
www.bristol.gov.uk/signup

